



LOTUS

BEHAVIORAL HEALTH CRISIS CENTER



A LOOK AT CIRBY HILLS

- Behavioral health services offered here since 2000
- Houses approx. 140 HHS staff & 50 contracted staff
- 54,600 sq ft building on 8.8 acre campus
- Also houses:

Primary care, Adult Protective Services,
Public Guardian and In-Home Supportive Services



A 'one-stop' approach

for consumers with mental health/other needs



Primary Care

Outpatient (including Wellness Center reopening soon)

Urgent Crisis (voluntary) - Lotus

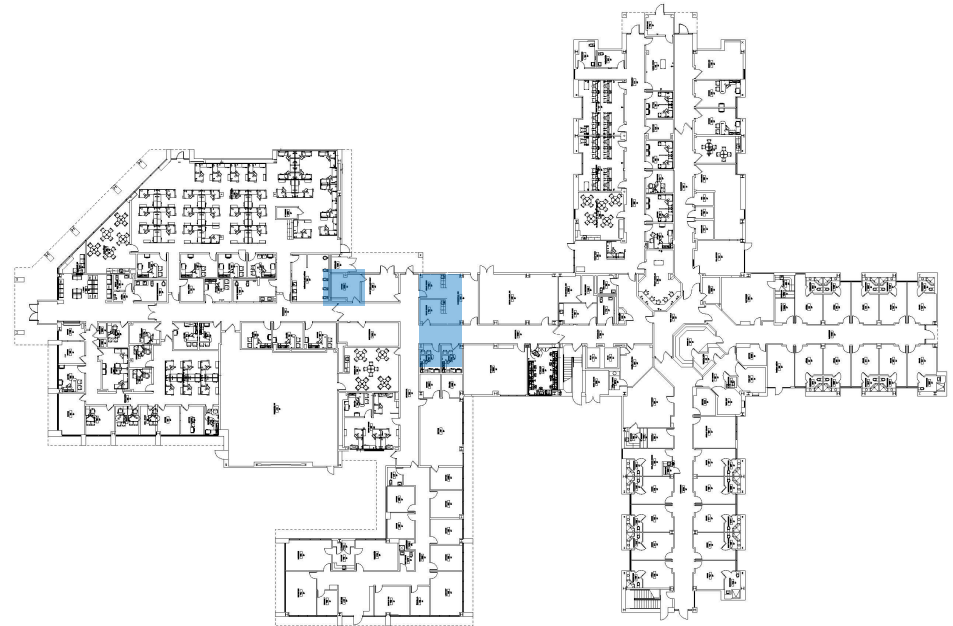
Crisis Residential (voluntary)

**Psychiatric Hospitalization
(involuntary)**



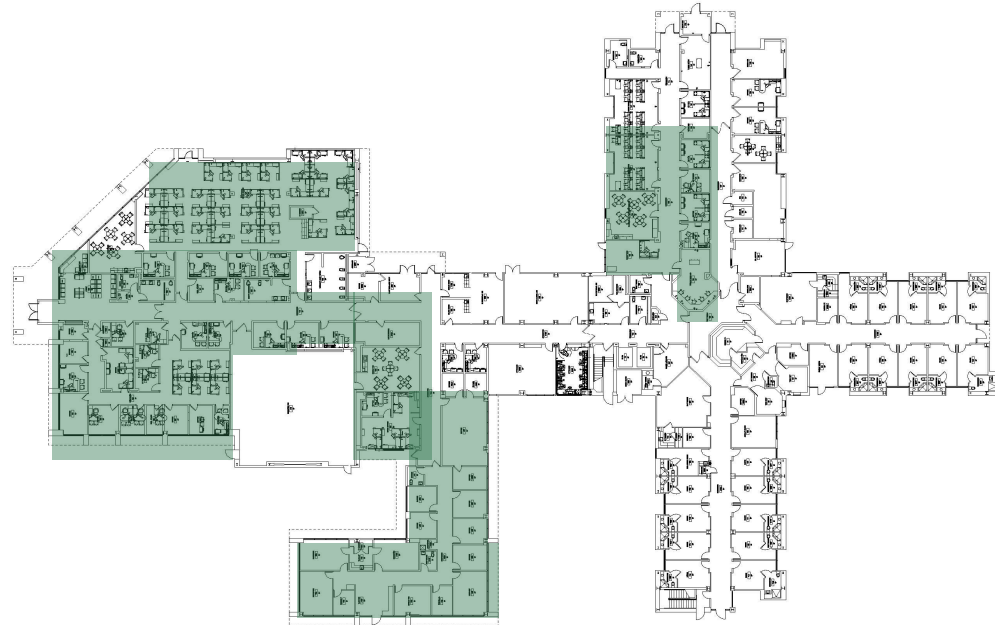
PRIMARY CARE

Western Sierra Medical Clinic now offers physical health services on site for Medi-Cal recipients



OUTPATIENT

- Psychiatric care
- Mental health treatment
- Enhanced Care Management (homeless)
- Substance use services
- Forensic Mental Health (e.g. collaborative courts, etc.)
- Wellness Center – reopening soon with activities, peer support!





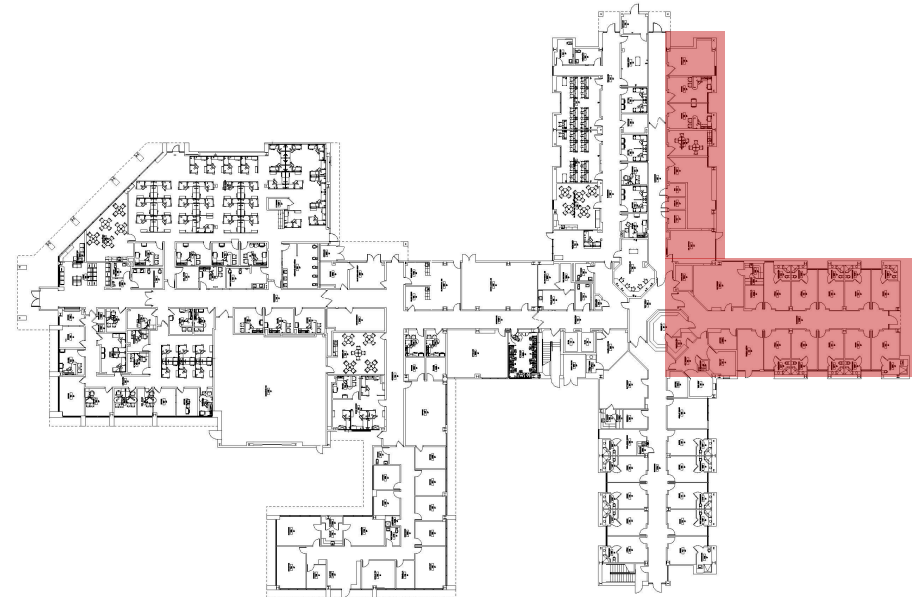
CRISIS RESIDENTIAL (VOLUNTARY)

- 14 beds at “Cornerstone”
- Operated by Yolo Community Care Continuum (YCCC)
- Stays of up to 30 days
- Helps prevent involuntary psychiatric hospitalization

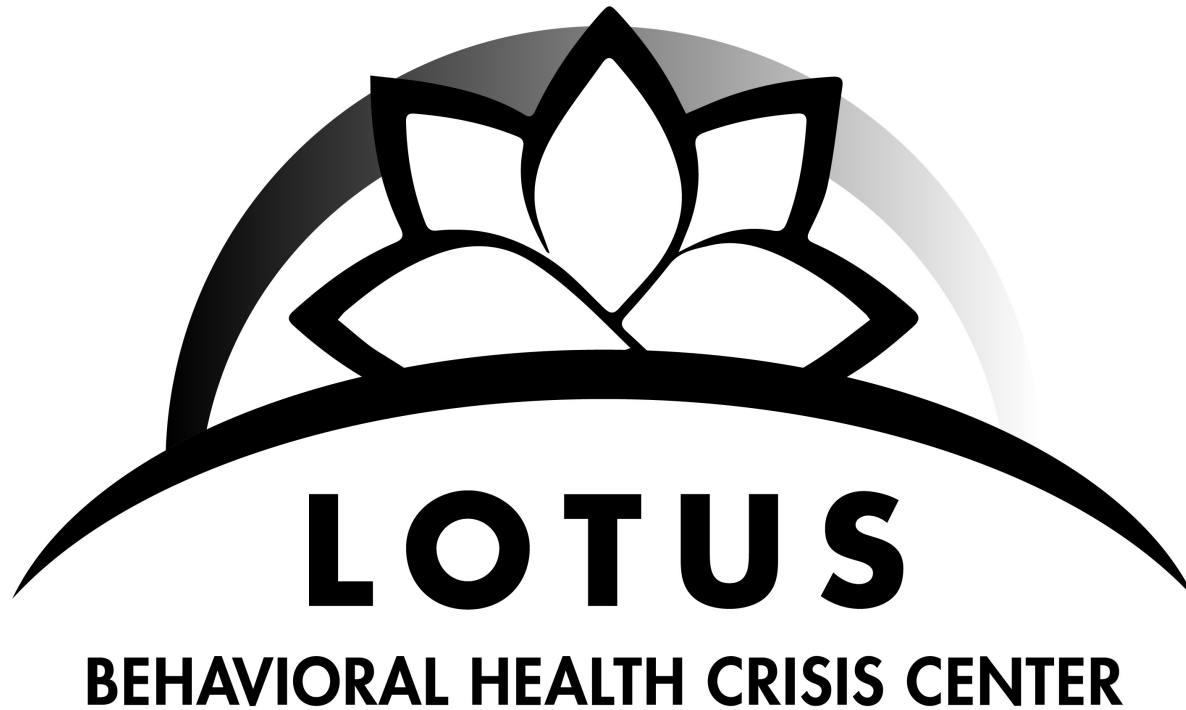


PSYCHIATRIC HOSPITALIZATION (INVOLUNTARY)

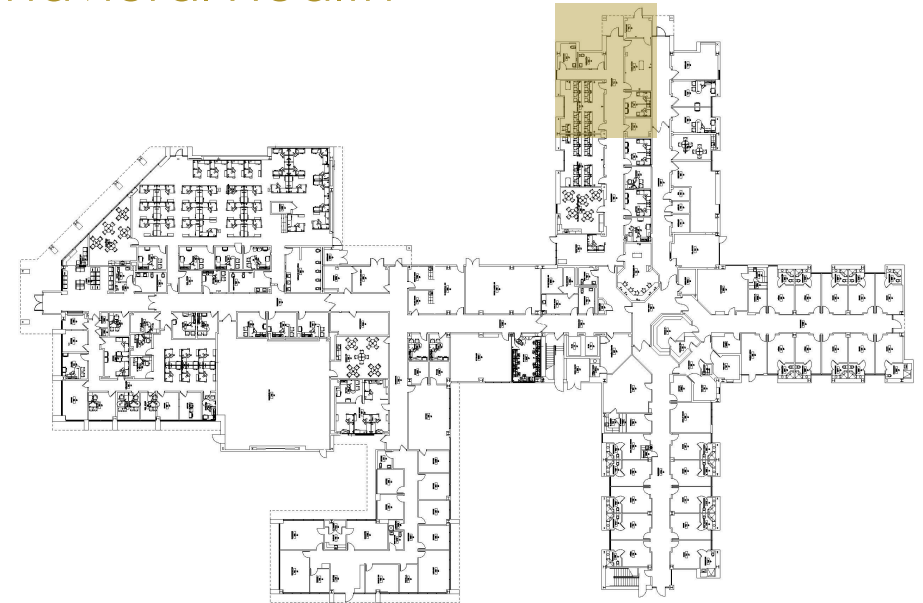
- 16 bed Psychiatric Healthy Facility, or PHF, at “Cirby Hills Behavioral Health”
- Run by North Valley Behavioral Health
- Individuals on Medi-Cal
- Short term stays before transitioning to lower levels of care



AND THE NEWEST ADDITION: URGENT CRISIS (VOLUNTARY)



- **Different from other levels of care:**
Homelike environment with linkage to follow up care; **low barrier** to entry
- Eligible to Placer residents; insurance type not exclusionary
- Operational support from North Valley Behavioral Health





OUR PARTNERS



Health systems



Law enforcement



Service providers



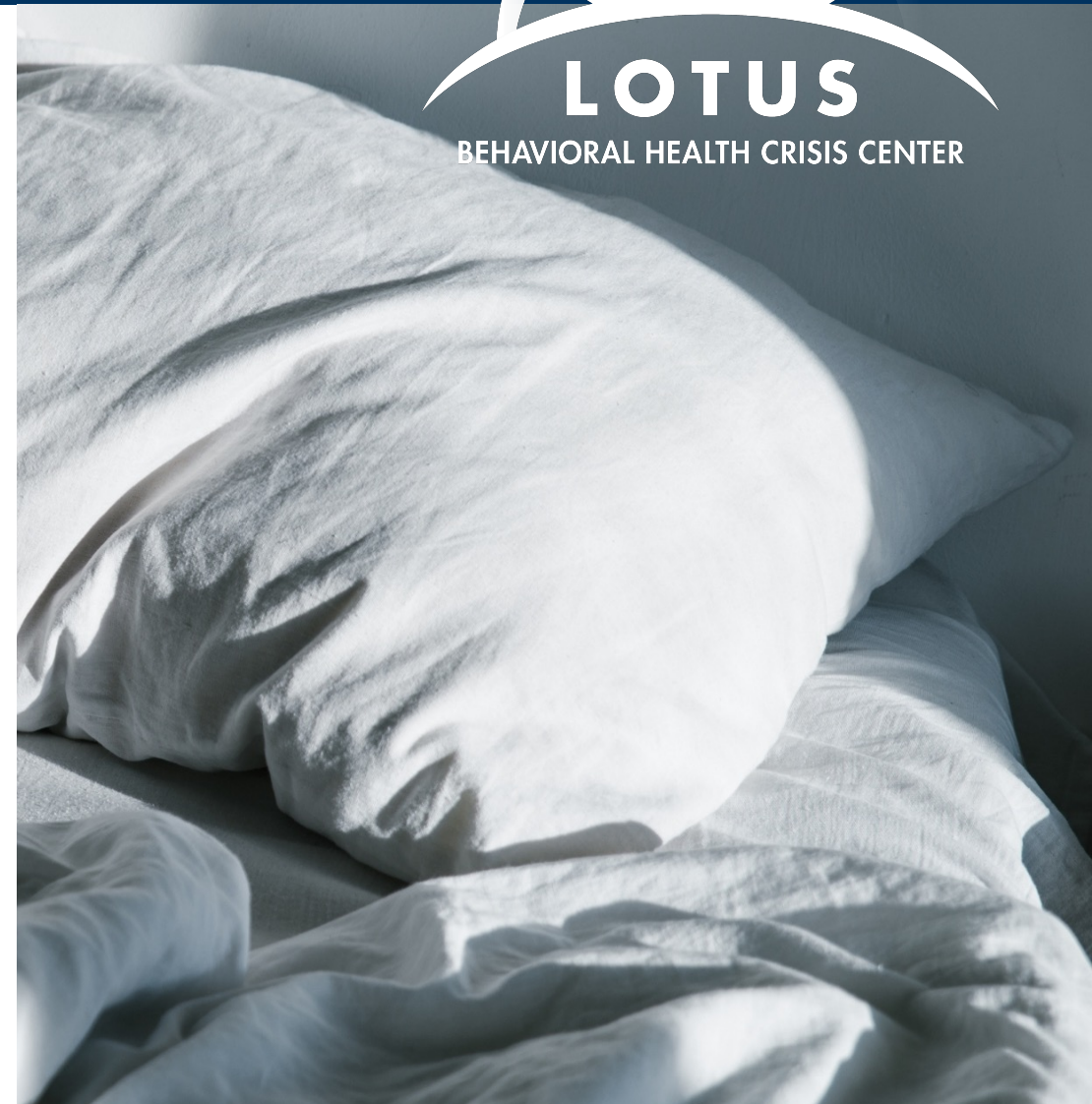
Other local, state
and federal
agencies/officials

THE BENEFITS

- ✓ Alleviate burden on **emergency rooms**
- ✓ Reduce mental health crisis-related contact with **law enforcement**
- ✓ Increase and expedite **access** to services/resources
- ✓ Improve **outcomes** for clients
- ✓ Provide a voluntary and safe option for consumers needing time to **regroup** and create longer-term care plan

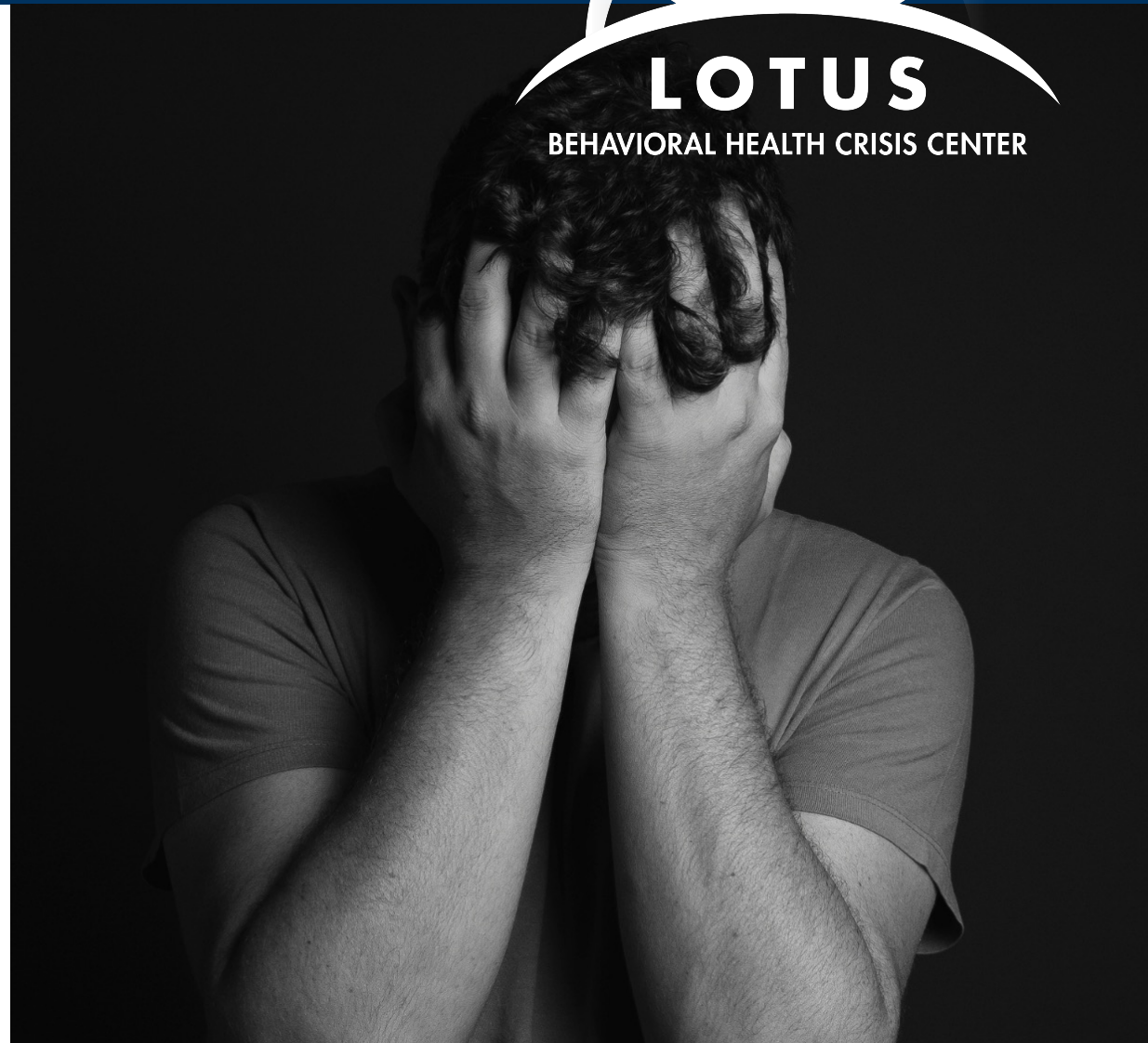
What will the program offer?

- Length of stay: up to 48 hours
- Capacity: 6 beds/recliners
- Mental health clinicians and counselors
- Peer advocate support
- Limited nursing support
- 1 to 1 support, small group interaction, and individual time to decompress



What will the program offer?

- Crisis intervention
- Safety and discharge planning
- Case management
- Group therapy
- Individual therapy or rehab
- Health and wellness education
- Assessments and treatment planning
- Substance use screening





Referring to Lotus

WHY

- Decompress and problem-solve
- Avoid involuntary hospitalization
- Connect to services and additional resources
- “Step Up” or “Step Down” for additional stabilization

HOW

- **Self-referral:** 24-Hour Phone Line at 916-787-8860 or 1-888-886-5401
- Referrals from **health care partners, law enforcement, others**
- In-person mental health **screening clinics** at Cirby Hills



THANK YOU TO OUR BOARD, CEO & FUNDING PARTNERS





AND TO OUR CONSTRUCTION PARTNERS

